

# VENTO EXPERT A100-1 S10 W V.2

## HEAT RECOVERY SINGLE-ROOM UNITS

### Features

- Arrangement of efficient energy-saving, supply and exhaust, single-room ventilation in flats, houses, cottages, social and commercial premises.
- Reducing heat losses caused by ventilation due to heat recovery.
- Humidity balance and controllable air exchange create individually controlled micro-climate.
- Wi-Fi data exchange between several single-room ventilation units for coordinated operation.
- Controlled by Android or iOS smartphone or tablet.
- Connection to smart house or Building Management System (BMS).



**Air flow:**  
up to 108 m<sup>3</sup>/h  
30 l/s



**Heat recovery efficiency:**  
up to 83 %



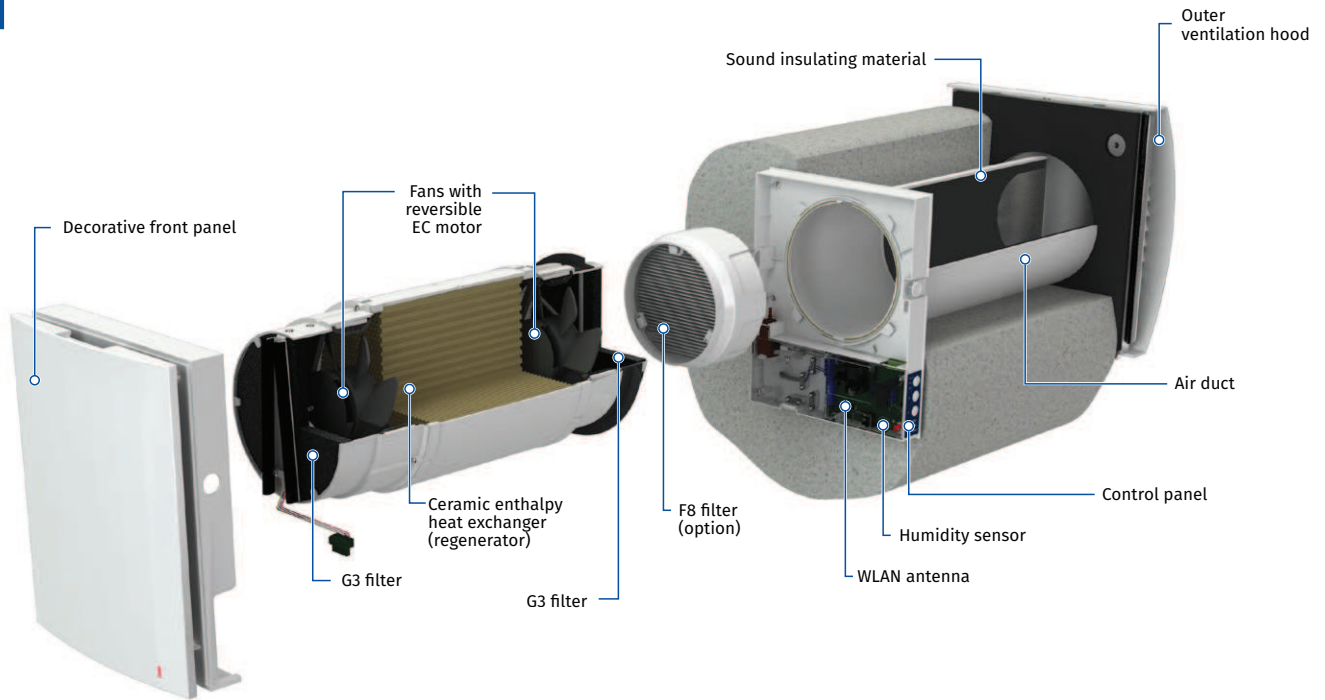
**Power:** from 3.2 W  
**SFP:** from 0.82 W/l/s



**Noise level:**  
from 13 dBA



### Design



One of the best heat recovery efficiency on the market due to innovative hexagonal structure of the heat exchanger cells



Built-in Wi-Fi for wireless communication between units and Android or iOS device control



Integrated automatic air shutters prevent air back drafting



Easy maintenance. Indoor unit is opened by pressing the latches on both sides. The specially designed front panel can be closed manually to ensure 100 % air tightness and protect against wind impact

### Designation key

Model	Air duct	Maximum air flow [m <sup>3</sup> /h]	Unit modification	Ventilation hood type	Control
Vento Expert	A: round air duct	100	-1	S10: plastic outer ventilation hood AH-10 white 160 (for standard walls) S: metal hood (for thin walls)	W V.2: control and setup of the unit with the Wi-Fi mobile application

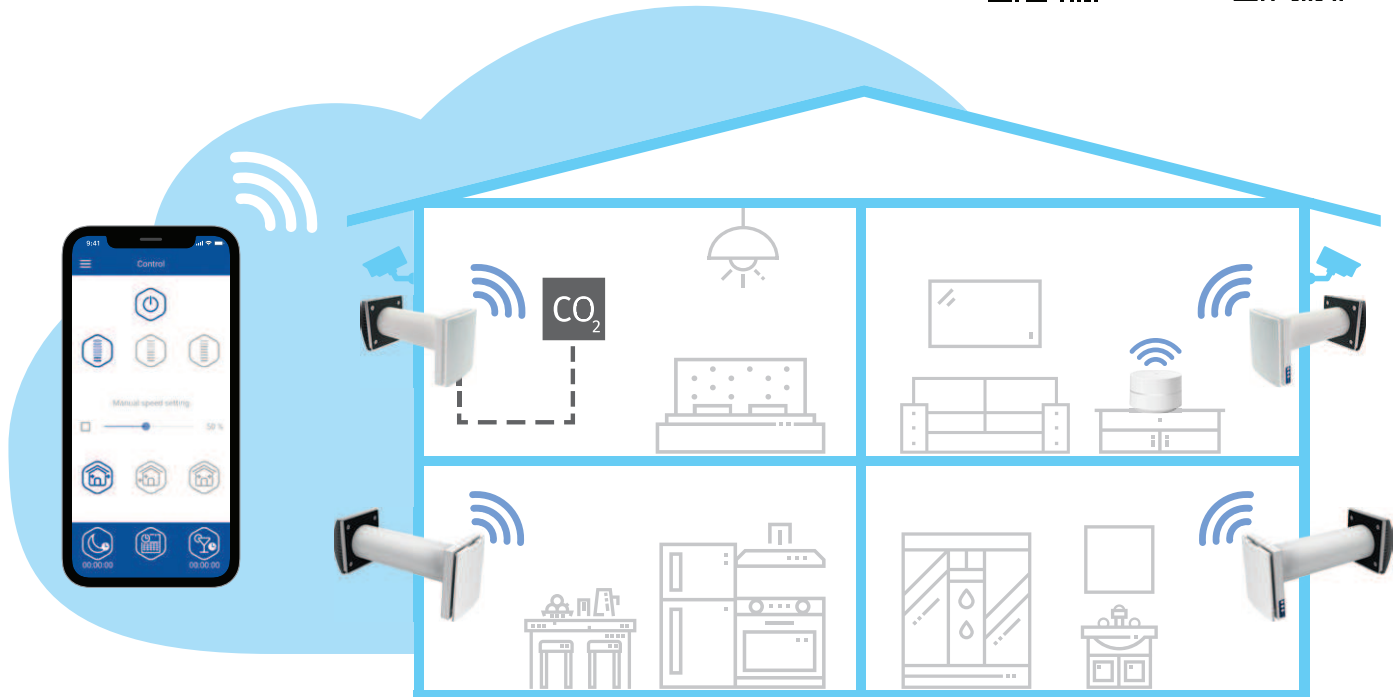
# VENTO EXPERT A100-1 S10 W V.2

HEAT RECOVERY SINGLE-ROOM UNITS

## Control

- Unit control via smartphone or tablet application.
- The units can be connected by Wi-Fi for synchronized operation.
- House ventilation control via cloud service from anywhere in the world.
- Connection to smart house or Building Management System (BMS) via Wi-Fi.

Blauberg Vento V.2 app for Android or iOS devices is available at Google Play and App Store.



SMART HOUSE

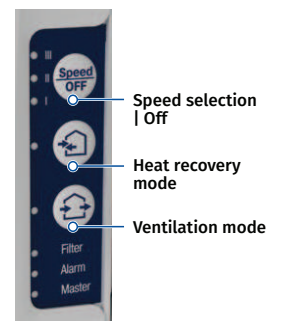
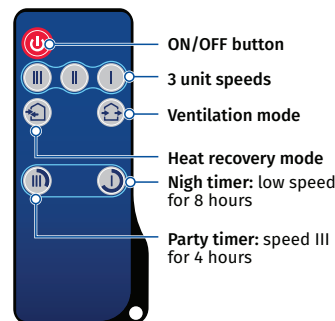


- Vento Expert A100-1 S10 W V.2 either can operate as independent unit or can be connected with other units in a house and controlled with a master unit. In this case, only the master unit receives a signal from the remote control.

- Control of the unit operation mode is also performed by means of the sensor control panel located on the unit casing or the remote control.



Vento Expert A100-1 S10 W V.2



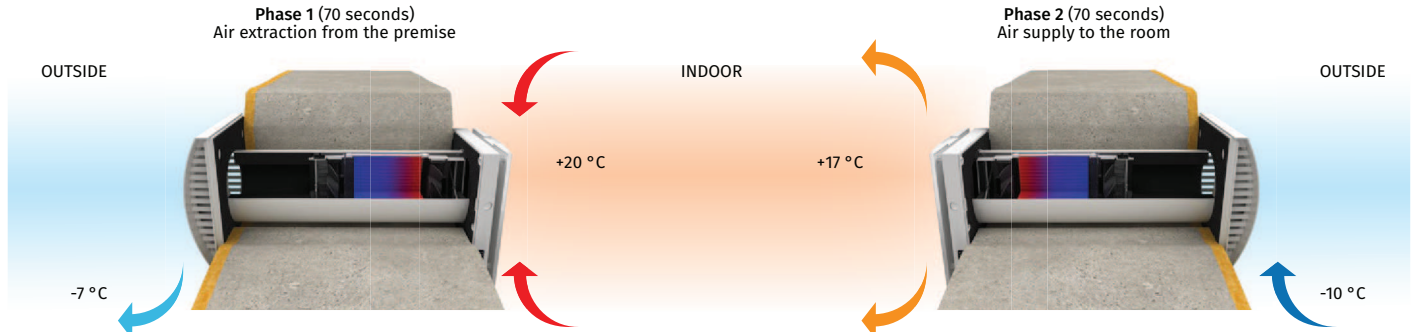
- Vento Expert A100-1 S10 W V.2 is equipped with a humidity sensor for indoor humidity control. If humidity increases above a set point, the unit boosts to the speed III.

# VENTO EXPERT A100-1 S10 W V.2

## HEAT RECOVERY SINGLE-ROOM UNITS

### Energy recovery

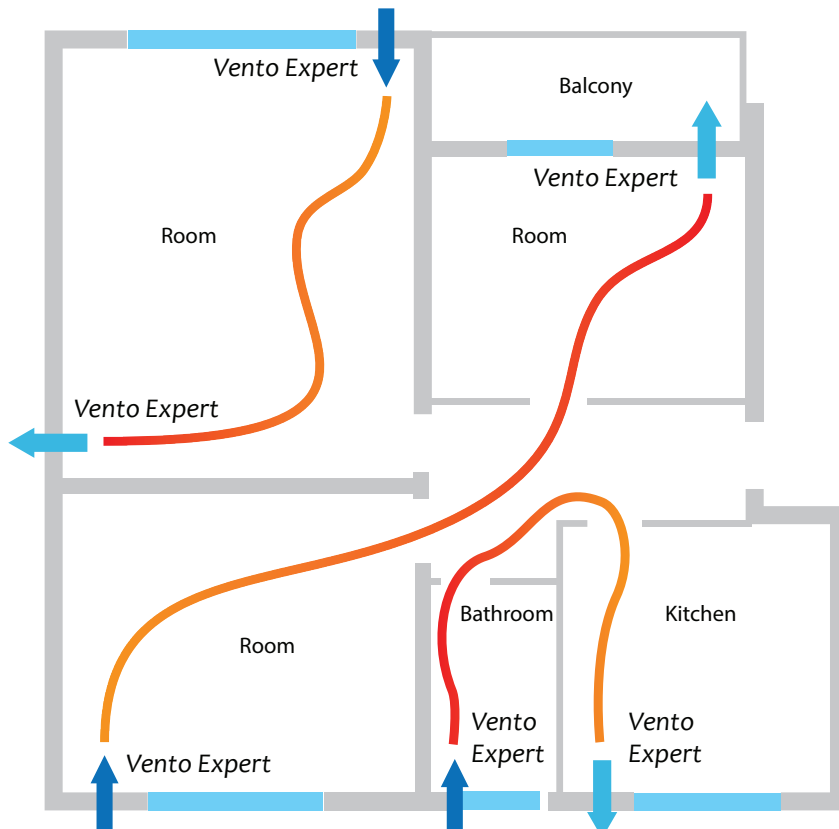
#### UNIT OPERATING LOGIC IN WINTER PERIOD



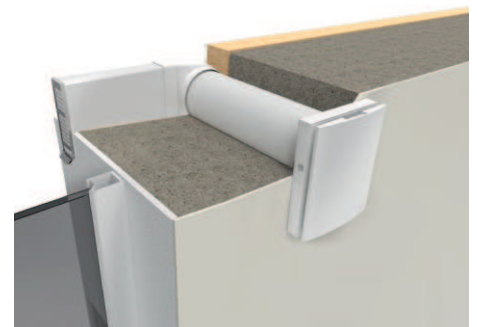
- Warm stale air is extracted from the premise, flows through the ceramic heat exchanger and transfers its heat and moisture to it.
- As the ceramic heat exchanger gets warmed up, the unit switches to the supply mode.
- Clean cold intake air flows through the heat exchanger and absorbs accumulated heat and humidity.
- When the heat exchanger is cooled down, the unit switches to the extract air mode.

### Mounting

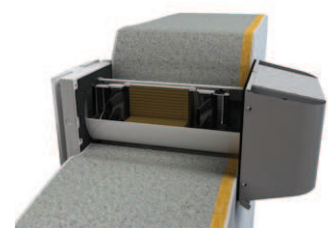
- The unit is designed for through-the-wall installation inside a prepared hole in an outer wall of the building.
- The best ventilation solution is pairwise installation of reverse phase synchronized units. Some units ensure supply of fresh air to the room and the other units extract air from the premise. This way the most efficient balanced ventilation is arranged.
- The Vento **Expert A100-1 W V.2** unit can also be installed in a bathroom and kitchen, if allowed by local building codes. Otherwise, the **Vento Expert Duo** unit or an extract fan should be installed.



Angular mounting into a wall with standard thickness using **KIT BlauPlast white 160 / KIT BlauPlast chrome 160**



Unit installation example with the hoods for thin walls **AH-S grey 160 / AH-S chrome 160**



# VENTO EXPERT A100-1 S10 W V.2

HEAT RECOVERY SINGLE-ROOM UNITS

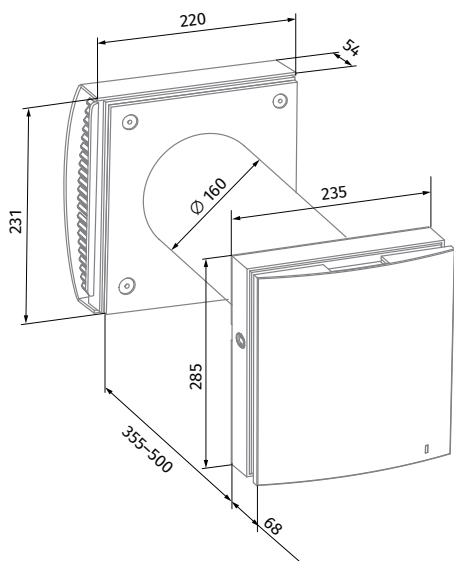
## Technical data

Parameters	Vento Expert A100-1 S10 W V.2 Vento Expert A100-1 S W V.2			
	I	II	III	MAX
Speed				
Voltage [V / 50 (60) Hz]	100-240			
Power [W]	3.20	4.00	6.60	18.00
Current [A]	0.037	0.046	0.071	0.151
RPM [min <sup>-1</sup> ]	780	1100	1920	2940
Air flow in ventilation mode [m <sup>3</sup> /h (l/s)]	18(5)	30 (8)	58 (16)	108 (30)
Air flow in energy recovery mode [m <sup>3</sup> /h (l/s)]	9 (3)	15 (4)	29 (8)	54 (15)
SFP [W/l/s]	1.28	0.96	0.82	1.20
Filter	G3 (Option: F8 PM2.5 > 99 %*)			
Transported air temperature [°C]	-20...+40			
Sound pressure level at 1 m in accordance with ISO 3741:2004 [dBA]	23	27	40	51
Sound pressure level at 3 m in accordance with ISO 3741:2004 [dBA]	13	18	30	42
Outdoor sound pressure attenuation in accordance with DIN EN 20140 [dBA]	42			
Classification of air flow sensitivity to pressure difference variations in accordance with EN 13141-8	S2			
Indoor/outdoor airtightness classification of the complete unit in accordance with EN 13141-8	D1			
Heat recovery efficiency in accordance with DIBt LÜ-A 20 [%]	up to 87			

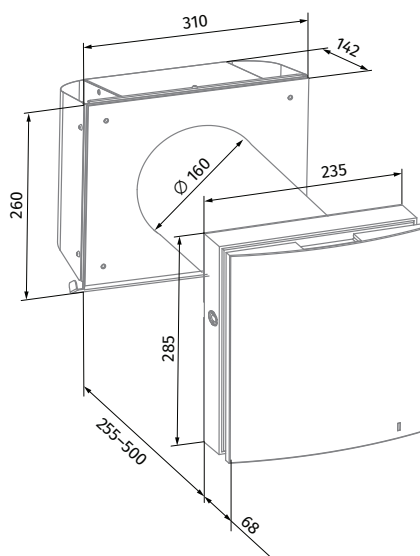
\* maximum air flow 82 m<sup>3</sup>/h

ENERGY LABEL: A (Energy efficiency), 50 dB (Sound power level), 54 m<sup>3</sup>/h (Air flow). Includes EU energy label logo and manufacturer information.

## Overall dimensions [mm]



Vento Expert A100-1 S10 W V.2

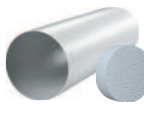


Vento Expert A100-1 S W V.2  
(for thin walls)

# VENTO EXPERT A100-1 S10 W V.2





## HEAT RECOVERY SINGLE-ROOM UNITS

### Accessories

Name		Description
FP Vento Expert A100 G3		G3 filters (2 pcs.)
FP Vento Expert A50 F8		Filter set. Includes: • Plastic frame (1 pc.) • G2 pre-filter (1 pc.) • F8 filter (1 pc.). Filtration rate PM2.5 > 99 %
AH-10 *colour* 160		Plastic outer ventilation hood. Available in colours: 
AH-10 chrome 160		Plastic outer ventilation hood with a plate with brushed stainless steel effect finish
AH-11 *colour* 160		Plastic outer ventilation hood. Available in colours: 
AH-S grey 160		Stainless steel ventilation hood, painted grey
AH-S chrome 160		Brushed stainless steel ventilation hood
PP 160/0.5		Plastic outer grille with pipe for mounting from indoor
KIT BlauPlast white 160		Kit for angular mounting with white color grille (for walls with standard thickness)
KIT BlauPlast chrome 160		Kit for angular mounting with stainless steel outer grille (for walls with standard thickness)
R 160-500		500 mm air duct and polystyrene foam plug
R 160-700		700 mm air duct and polystyrene foam plug
SE Vento Expert W		Sensor control panel

# VENTO EXPERT A100-1 S10 W V.2

## HEAT RECOVERY SINGLE-ROOM UNITS

Name		Description
FB Vento Expert A50		Remote control
CD-1		CO <sub>2</sub> sensor with LED CO <sub>2</sub> indication and a sensor button for operation mode selection
CD-2		CO <sub>2</sub> sensor
S Vento Expert A50		Cardboard template for indoor installation of the unit